

NOTES

MAGAZINES - AICS PATTERN MAGAZINES INCLUDING (MDT, AI , AICS, ACCURATE MAG)

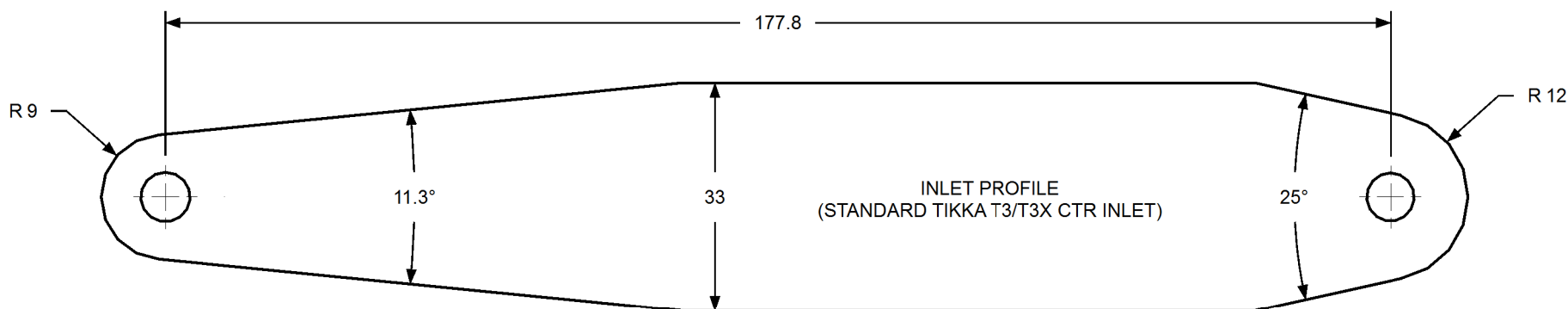
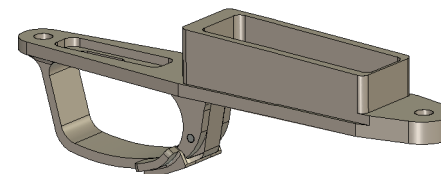
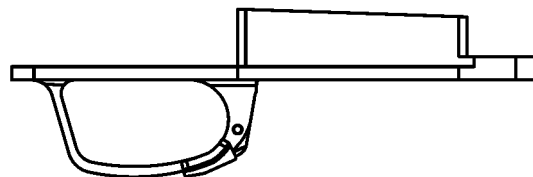
MAGPUL PMAGS WILL FIT OUR DBM BUT THEY DO NOT FIT INTO THE TIKKA T3/T3X ACTION

ACTION LENGTH - SHORT ACTION

DESIGNED TO FIT THE STANDARD TIKKA T3/T3X CTR INLET (REPLACES FACTORY CTR DBM)

FITS LEFT AND RIGHT HAND RIFLES

CAN ALSO BE USED IN A STANDARD TIKKA T3/T3X SHORT ACTION RIFLE HOWEVER INLETTING WILL BE REQUIRED.



FITTING INSTRUCTIONS

1. ALWAYS UNLOAD RIFLE BEFORE COMMENCING ANY WORK.
2. REMOVE EXISTING "FACTORY TRIGGER GUARD" IF NECESSARY.
3. IF YOU ARE FITTING THIS TO A NON CTR INLETTED STOCK, YOU WILL NEED TO INLET THE DBM BY FOLLOWING THE SHAPE OF THIS INLET PROFILE TO THE CORRECT DEPTH (TESTING FEED AS YOU GO). WE RECOMMEND ANY INLETTING TO BE DONE BY A COMPETENT GUNSMITH.
4. IF YOU ALREADY HAVE THE CTR INLET IN YOUR STOCK, COMMENCE TO FIT THE DBM INTO THE INLET.
5. USING EXISTING STANDARD CTR ACTION SCREWS, TIGHTEN UP DBM TO ACTION USING THE FACTORY SPECIFICATIONS.
6. INSERT AICS PATTERN MAGAZINE AND TEST FEED.
7. FOR TROUBLE SHOOTING PLEASE REFER TO OUR WEBSITE OR CONTACT US.
8. DIGITAL CAD FILE FOR CNC INLETTING AVAILABLE UPON REQUEST.
9. THIS PRODUCT CAN BE USED IN CONJUNCTION WITH OUR TITANIUM LUG (AW0480-A) AND BEDDING PILLARS (AW0511-A).
10. TO SWAP LEVER, REMOVE LEVER PIN WITH A PIN PUNCH AND INSERT ALTERNATIVE LEVER ENSURING SPRING IS IN PLACE. RE INSERT PIN.

IF IN ANY DOUBT , SEEK THE ADVISE OF A PROFESSIONAL GUNSMITH



Email: info@atlasworx.com

All measurements in millimetres unless otherwise stated.

Project / Client

TIKKA T3 /T3X CTR DBM / BOTTOM METAL
(AICS PATTERN MAGAZINES)

Title

INLET / INSTRUCTIONS FOR TIKKA T3 /T3X
CTR DBM / BOTTOM METAL
(AICS PATTERN MAGAZINES)

Drawn
CB

Scale
NTS

Drawing No
AW0490

Issue
A

Date
20/04/2019

This drawing is not to be released in whole or part to any third party without the express permission of Atlasworx

NO LIABILITY IS EXPRESSED OR IMPLIED FOR DAMAGE OR INJURY WHICH MAY RESULT FROM IMPROPER INSTALLATION OR USE WITH THIS PRODUCT